

# **IPMI SDR Editor User Manual**

**Version 1.02**

- 1. OVER VIEW .....3**
- 2. LOGIN .....3**
- 3. SAVE SDR .....3**
- 4. DELETE SDR .....4**
- 5. LOAD SDR.....4**
- 6. COMMAND LINE .....5**
- APPENDIX A .....6**

**Copyright © 2007 Super Micro Computer, Inc., All rights reserved.**

### 1. Over view

Super Micro IPMI SDR Editor is a tool which allows you to save the SDR to a file, to remove SDR sensor records, and load the SDR from a file. It is complied with IPMI 2.0 specification.

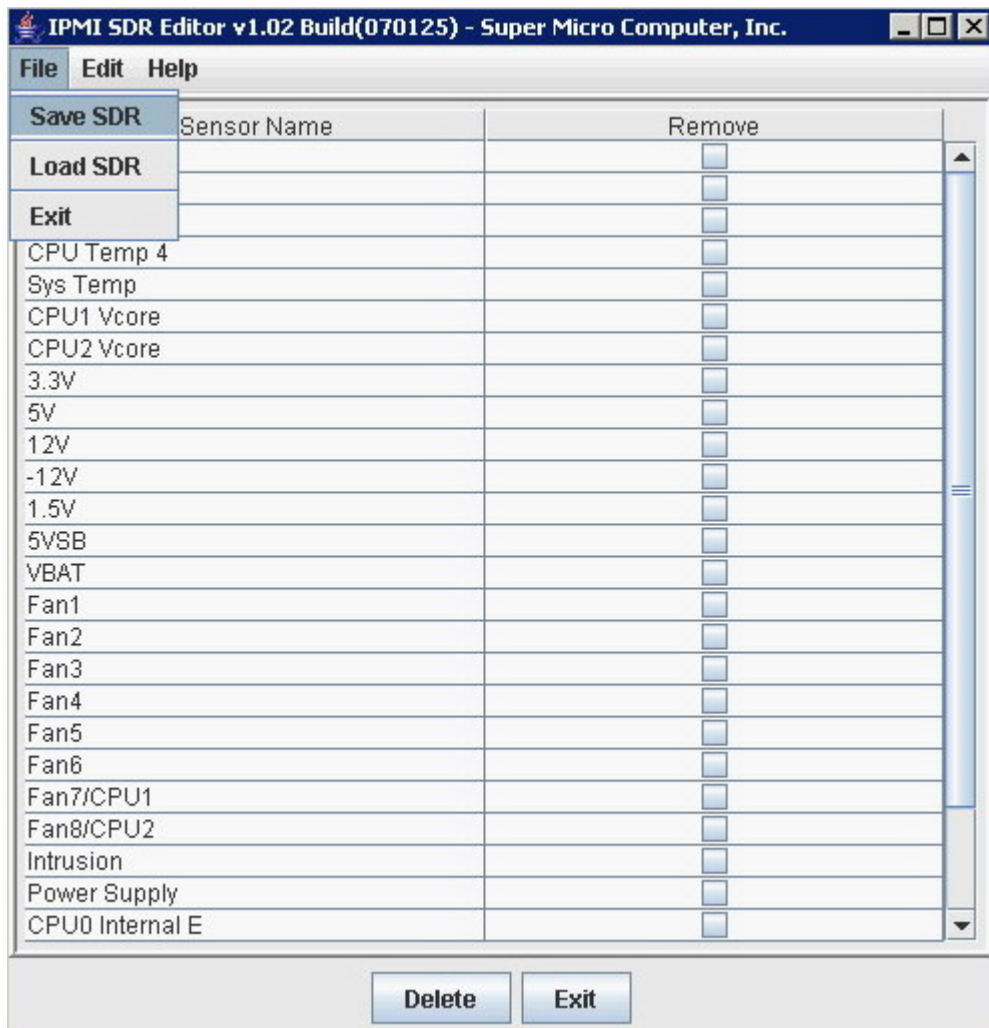
### 2. Login

Enter the IP address of the computer to be connected as well as the Login user name and password. Please be reminded that only those users, who have Administration privilege, are allowed to login.



The image shows a login dialog box titled "Supermicro IPMI SDR Editor Login". It contains three input fields: "Computer:" with the value "192.168.1.115", "Username:" with the value "ADMIN", and "Password:" with masked characters "\*\*\*\*\*". Below the fields are two buttons: "Login" and "Cancel".

### 3. Save SDR

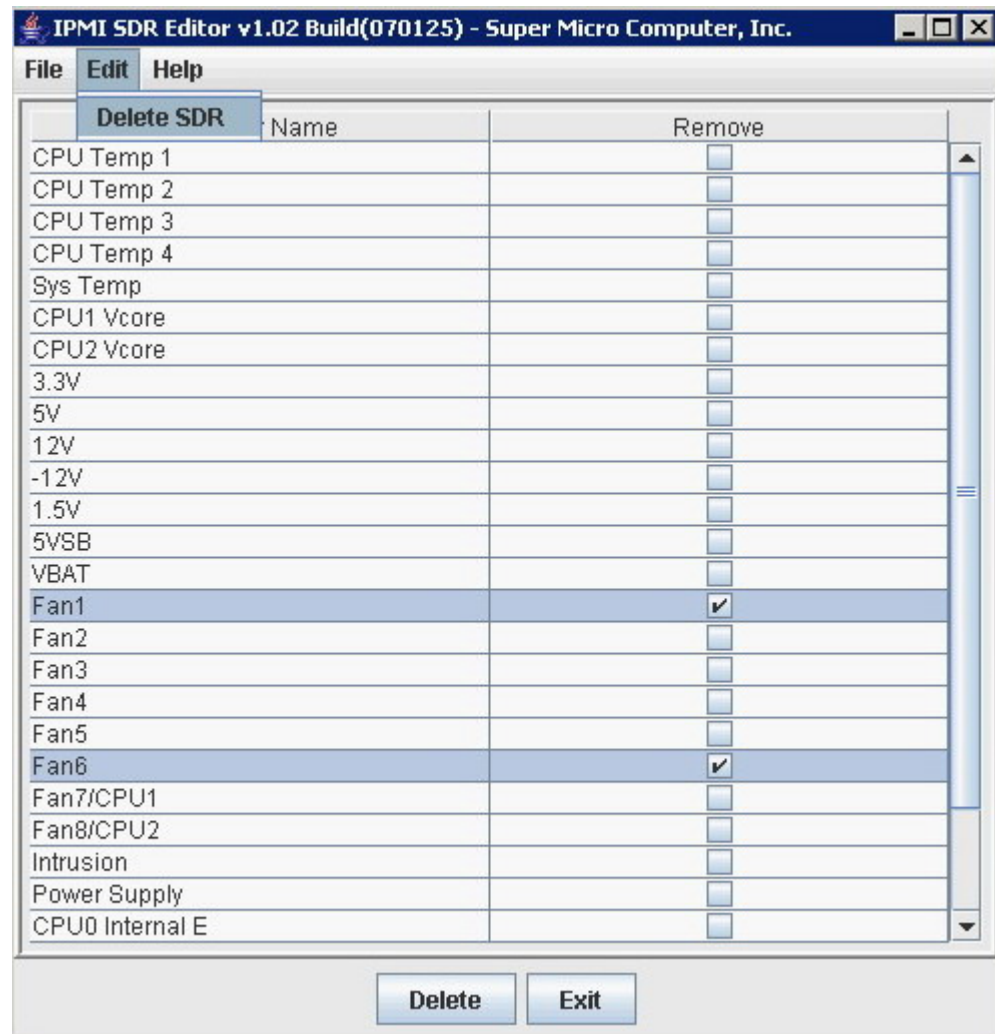


The image shows the main window of the "IPMI SDR Editor v1.02 Build(070125) - Super Micro Computer, Inc.". The window has a menu bar with "File", "Edit", and "Help". The "File" menu is open, showing options: "Save SDR", "Load SDR", and "Exit". The main area is a table with two columns: "Sensor Name" and "Remove". The table lists various sensors, each with a checkbox in the "Remove" column. At the bottom of the window are two buttons: "Delete" and "Exit".

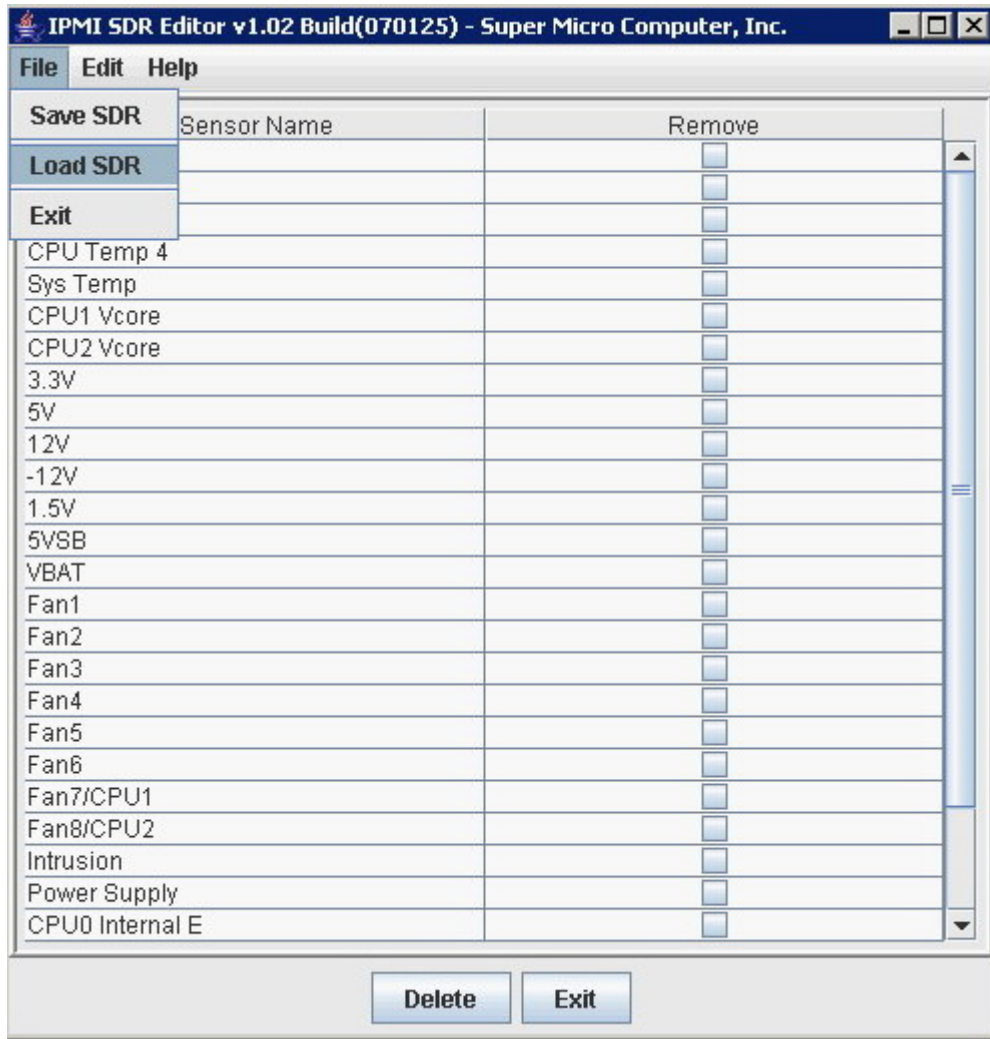
Sensor Name	Remove
	<input type="checkbox"/>
	<input type="checkbox"/>
	<input type="checkbox"/>
CPU Temp 4	<input type="checkbox"/>
Sys Temp	<input type="checkbox"/>
CPU1 Vcore	<input type="checkbox"/>
CPU2 Vcore	<input type="checkbox"/>
3.3V	<input type="checkbox"/>
5V	<input type="checkbox"/>
12V	<input type="checkbox"/>
-12V	<input type="checkbox"/>
1.5V	<input type="checkbox"/>
5VSB	<input type="checkbox"/>
VBAT	<input type="checkbox"/>
Fan1	<input type="checkbox"/>
Fan2	<input type="checkbox"/>
Fan3	<input type="checkbox"/>
Fan4	<input type="checkbox"/>
Fan5	<input type="checkbox"/>
Fan6	<input type="checkbox"/>
Fan7/CPU1	<input type="checkbox"/>
Fan8/CPU2	<input type="checkbox"/>
Intrusion	<input type="checkbox"/>
Power Supply	<input type="checkbox"/>
CPU0 Internal E	<input type="checkbox"/>

#### 4. Delete SDR

Check on the sensor(s) to be removed and then click on the Delete button or from the Delete SDR on the menu bar. **Please be reminded, an IPMI firmware RESET (Please see [Appendix A](#) for how to reset an IPMI unit) is required before the new configuration takes effective.**



#### 5. Load SDR



## 6. Command line

The SDR can be loaded to a remote computer buy using the command line. See below for the example.

```
D:\Working\IPMI\SDREditor\bin>SDREditor-1.02.exe -help
```

```
Usage: SDREditor -ip 192.168.1.115 -u ADMIN -p ADMIN -f C:\temp\SDR.txt
```

-ip      The IP address of a computer to connect.

-u      A valid username which has the administration privilege.

-p      Password.

-f      The SDR to be loaded.

-v (-version)    Show version number.

## Appendix A

1. To reset an IPMI firmware, click on the “Unit Reset” submenu under Maintenance menu and then click on the Reset button in the center of the “Unit Reset” page.

